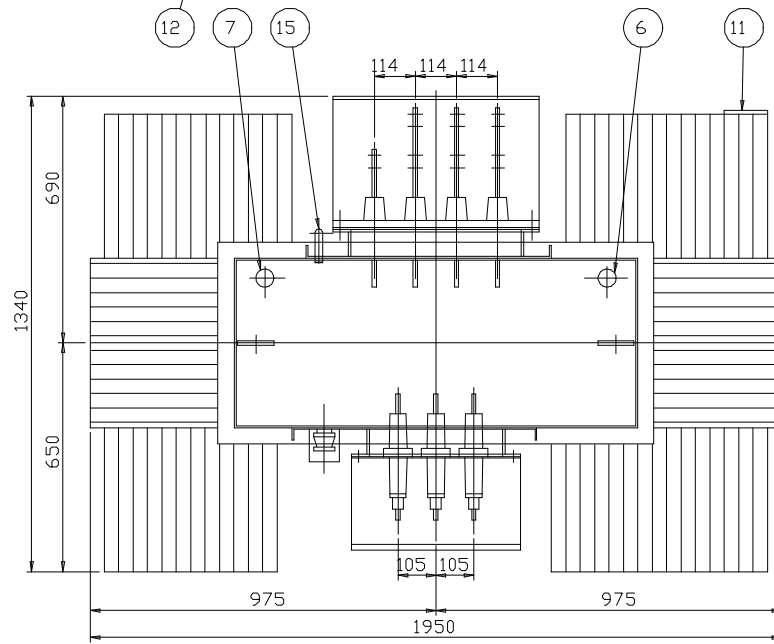


- 1 HV BUSHING 12 kV 250 A
- 2 LV CAST RESIN BUSHING ASSEMBLY
- 3 HV CABLE BOX ESI 35-1 FIG.C6
- 4 LV CABLE BOX ESI 35-1 FIG.C5
- 5 OFF-CIRCUIT TAP-CHANGER
- 6 FILLING HOLE
- 7 THERMOMETERPOCKET
- 8 LEVEL INDICATOR
- 9 LIFTING LUGS COMPLETE TRANSF.
- 10 SKID
- 11 RATING PLATE
- 12 REST DRAIN VALVE 1"
- 13 EARTHING FLAG
- 14 JACKING BOSSES
- 15 PLAIN BREATHING DEVICE



H.V. : 11000 V
 L.V. : 433 V
 Dyn11

WEIGHTS :
 OIL : 600 kg
 TOTAL : 2670 kg

CERTIFIED
 DRAWING

	Name	Date		3			
Drawn by	VLG	5-5-98		2			
Checked	DCJ			1			
Proj. eng.	Keulemans	6-5-98		Nr.	Revision	Name	Date
Our drawings may not be reproduced without our permission				Customer		Scale	ISO Symb.
(Belgian law 12 March 1886)				98.1.2349-2354	6x1000 kVA	PTI	
				Worknumber	Quantity		
	Title					Drawing Nr.	
	CABLE CONNECTED TRANSFORMER					211/9812349	
						R	